



Bwrdd Iechyd Prifysgol  
Aneurin Bevan  
University Health Board

Dyfodol  Clinigol  
Clinical Futures

# Your NHS services in Gwent are changing

when The Grange University Hospital  
opens on November 17th 2020





BSL Version

# Changes to Emergency Hospital Services



**The new Grange University Hospital**

The new **Grange University Hospital** will open on 17th November. It will treat very sick patients, or those with very bad injuries. It will be the Emergency Department for people living in Gwent.



**Phone 999** or go straight to **The Grange University Hospital** if you are very, very ill or have a very bad injury like:

- Not being able to breath properly
- Very bad pain or if you are bleeding a lot
- Pain in your chest or if you think you have had a stroke
- Very, very bad injuries (eg. from a car crash)



The Royal Gwent Hospital and Nevill Hall Hospital will no longer treat people who are very sick or have very bad injuries. They will go to The Grange University Hospital where doctors will look after them.



BSL Version

# Where to go if you have a minor injury



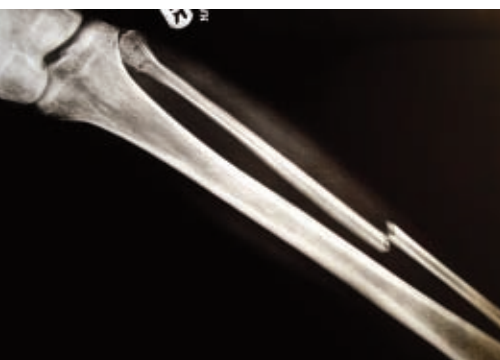
**The Royal Gwent Hospital**



**Nevill Hall Hospital**



**Ysbyty Ystrad Fawr**



There will be Minor Injury Units at The Royal Gwent Hospital, Nevill Hall Hospital and Ysbyty Ystrad Fawr. These will be open every day, all day and night.

Ysbyty Aneurin Bevan will also have a Minor Injury Unit. This is open 9am-7pm Monday to Friday (closed weekends and bank holidays). Special nurses work in our Minor Injury Units.

The Royal Gwent Hospital and Nevill Hall Hospital will no longer treat people who are very sick or have very bad injuries. They will go to the new Grange University Hospital where doctors will look after them.

**Minor injury Units** can help you if you have:

- A broken leg or arm
- Cuts or small burns
- If you have bumped your head
- If you have a bite
- If you have hurt your eye, ear or nose or have something stuck in them
- If you need an X-Ray for an injury (a picture taken of your bones to see if they are broken).



BSL Version

# What to do if your child has an illness or injury



**The new Grange University Hospital**



When the new Grange University Hospital opens, children who have very bad injuries or are very sick will go there. Special Children's Doctors and Nurses will look after them.

All children aged under one year old will need to be seen at the new Grange University Hospital.



Children with smaller injuries will need to go to The Royal Gwent Hospital, Nevill Hall Hospital and Ysbyty Ystrad Fawr. These hospitals will still have routine children's appointments and do small operations.



If you are having a baby your care will be at the Royal Gwent Hospital, Nevill Hall Hospital, Ysbyty Ystrad Fawr and Ysbyty Aneurin Bevan.

If you need a special doctor to help when your baby is born you will be sent to the new Grange University Hospital.



BSL Version

# Community Hospitals



**Community Hospitals will still be open.**  
These hospitals help look after you closer to your home.

You may also visit these hospitals for appointments and clinics.

These are all community hospitals:

- Ysbyty Aneurin Bevan
- Chepstow Community Hospital
- St Woolos Hospital
- County Hospital
- Monnow Vale Health and Social Care Centre
- Rhymney Health and Social Care Centre



BSL Version

# Other Health Services



**GP** - GP is another word for family Doctor. You can phone your local GP to make an appointment if you are unwell. The person that answers the phone may ask one of the special nurses that work with the doctors to see you instead.



**Dentist** - A Dentist can help if you have pain in your teeth or gums.



**Optician** - An Optician can help if you have bad eyes or need glasses.



**Pharmacies and Chemists** - they can help if you need medicine for things like headaches and colds.



**NHS 111** - you can phone NHS 111 if you are unwell, unsure what to do and need help. You can also phone this number if you need to see a GP quickly when your own GP Surgery is closed. If you do not speak English, they can get someone to speak to you in your own language.



BSL Version

# How to get to the Hospitals



**The new Grange  
University Hospital**



## **The new Grange Hospital**

The new Hospital is in Cwmbran, which is in the centre of Gwent.

## **Buses**

Please visit the 'Hospitals' page on our website at [www.abuhb.nhs.wales](http://www.abuhb.nhs.wales) to find out about buses and how to get to all of the hospitals.

## **Bus Times**

For bus times, please visit the Traveline website [www.traveline.cymru](http://www.traveline.cymru), or phone **0871 200 2233** (calls cost 12p per minute).

## **Hospital Car Parking**

Car parking is free at all hospital sites.



BSL Version



**GIG**  
CYMRU  
**NHS**  
WALES

Bwrdd Iechyd Prifysgol  
Aneurin Bevan  
University Health Board

**Dyfodol**  **Clinigol**  
**Clinical Futures**

This booklet was made by Aneurin Bevan University Health Board.  
Please visit our website if you would like this booklet in a different format or language  
<https://abuhb.nhs.wales/>