

# 19 Hills Health & Wellbeing Centre (Newport East)

We at Kier Construction are delighted to have been appointed by Aneurin Bevan University Health Board to complete the programme of works, building the new 19 Hills Health and Wellbeing Centre, Ringland, Newport.

### Who are Kier?

We are the UK's largest regional builder, with a network of 88 offices across the UK, delivering over £2b of projects annually to both private and public-sector clients. We provide a comprehensive building, design and facility management service across all market sectors. Our local Office is based in St Mellons, Cardiff.

### Project Overview

Aneurin Bevan University Health Board, together with Newport City Council and our third sector partners, the Health and Wellbeing Centre will form part of a vibrant community hub which will be available to Newport East residents. Services available will include:

- GP Services
- Learning Disability Services
- Dental Services
- Memory Assessment Clinics
- Sexual Health Services
- Audiology
- Flying Start
- Health Visitors
- Dieticians
- District Nurses
- Speech and Language Therapy Services
- Wellbeing Support
- Podiatry Services
- Substance Misuse Services
- Diabetic Retinopathy
- Mental Health
- Abdominal Aortic Aneurysm Screening

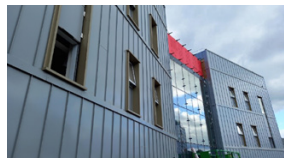
In addition to medical services, the community hub will bring people together to support wellbeing, reduce loneliness and promote independent living, all in a welcoming environment.

### Construction Update

Cladding and brickwork are nearing completion in the coming weeks around the outside of the building, and

the scaffold on the main road will be coming down shortly. With the building now watertight, internal works are progressing well, with rooms formed and 1st fix mechanical and electrical fit out in progress. Over the next few months, we will be bringing in finishing trades, such as decorators, floor layers and fitting internal doors. With the arrival of summer, we will start to make progress on the external works, forming the patient car park and landscaped areas around the building.

Services will start to move into the Health and Wellbeing Centre at the start of 2025. Patients from Ringland Medical Practice and Park Surgery will receive correspondence from the Health Board notifying them of when they will be moving to the new centre.



### Community Engagement Update

Spring has been busy for community engagement. Over the past two months, we have had the pleasure of hosting 58 students from Coleg Gwent on site to learn about the project. The students were given a presentation on the trades and technology involved in the project, followed by a tour of the building.

In May, we participated in the Community Consultation Event organised by Aneurin Bevan University Health Board for the development. This event was a wonderful opportunity for us to discuss all of the progress made on-site with local residents.

This month, we extended our support to Coleg Gwent's carpentry students for their final project by writing a design brief for two benches and a bin store. The college generously donated these items to our site, where they are now enjoyed

### Meet the team....



**Nick Hamersley**  
Project Manager  
(Project Lead)



**Ian Davies**  
Project Manager



**Peter Stanton**  
Contracts  
Manager



**Abigail Bowler**  
CSR Coordinator



**Lorraine Morgan**  
ABUHB  
Programme  
Manager



**Carolyn Frame**  
ABUHB  
Primary Care  
Communications  
Manager

by our staff during their breaks. Once our work on-site is complete, these benches will find a new home in a local school or charity, so they can be enjoyed for many summers to come.

If you would like us to consider an engagement/initiative with you, please contact Abigail Bowler via email [abigail.bowler@kier.co.uk](mailto:abigail.bowler@kier.co.uk)





Kier Construction Cymru a'r Gorllewin

# Canolfan Iechyd a Lles 19 Bryn (Dwyrain Casnewydd)



RHIFYN 05

Rydyn ni yn Kier Construction wrth ein bodd fod Bwrdd Iechyd Prifysgol Aneurin Bevan wedi ein penodi ni i gwblhau rhaglen waith i adeiladu'r Ganolfan Iechyd a Lles 19 Bryn newydd yn Ringland, Casnewydd.

### Pwy yw Kier?

Ni yw cwmni adeiladu rhanbarthol mwyaf y DU. Mae gennym rwydwaith o 88 o swyddfeydd ar draws y DU ac rydyn ni'n cyflawni dros £2bn o brosiectau'n flynyddol ar gyfer cleientiaid o'r sectorau preifat a chyhoeddus. Rydyn ni'n darparu gwasanaeth adeiladu, dylunio a rheoli cyfleusterau ar draws holl sectorau'r farchnad. Mae ein Swyddfa leol yn Llanelwng, Caerdydd.

### Trosolwg o'r Prosiect

Trwy bartneriaeth rhwng Bwrdd Iechyd Prifysgol Aneurin Bevan, Cyngor Dinas Casnewydd a phartneriaid o'r trydydd sector, bydd y Ganolfan Iechyd a Lles yn rhan o hyb cymunedol bywiog ar gyfer trigolion Dwyrain Casnewydd. Bydd y gwasanaethau'n cynnwys:

- Gwasanaethau Ymarferydd Cyffredinol
- Gwasanaethau Anabledau Dysgu
- Gwasanaethau Deintyddol
- Clinigau Aseu Cof
- Gwasanaethau Iechyd Rhywiol
- Awdioleg
- Dechrau'n Deg
- Ymwelwyr Iechyd
- Dietegwyr
- Nyrsys Ardal
- Gwasanaethau Therapi Lleferydd ac Iaith
- Cymorth Lles
- Gwasanaethau Podiatreg
- Gwasanaethau Cam-drin Sylweddau
- Retinopathi Diabetig
- Iechyd Meddwl
- Sgrinio Ymlediad Aortig yn yr Abdomen

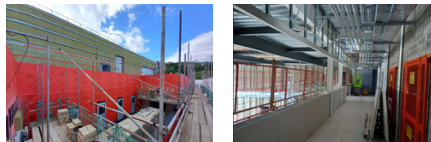
Yn ogystal â gwasanaethau meddygol, bydd yr hyb cymunedol yn tynnu pobl ynghyd i hybu lles, lleihau unigrwydd a chynorthwyo pobl i fyw'n annibynnol, a'r cyfan mewn amgylchedd croesawgar.

### Diweddariad ar y Gwaith Adeiladu

Mae'r cladin a'r gwaith bricks ar y tu allan i'r adeilad yn agos at gael eu cwblhau, a

bydd y sgaffaldiau ar yr heol fawr yn dod i lawr cyn bo hir. Nawr bod yr adeilad yn ddwrglos, mae'r gwaith mewnol yn dod yn ei flaen yn dda, gyda'r ystafelloedd wedi eu ffurfio a'r gwaith gosod mecanyddol a thrydanol i'w darparu. Dros y misoedd nesaf, byddwn ni'n dod â'r crefftwyr gorffen i mewn i addurno, gosod y lloriau a gosod y drysau mewnol. A dros yr haf, byddwn ni'n dechrau gwneud cynnydd gyda'r gwaith allanol, gan ffurfio maes parcio'r cleifion a'r ardaloedd wedi eu tirlunio o gwmpas yr adeilad.

Bydd gwasanaethau'n dechrau symud i'r Ganolfan Iechyd a Lles yn gynnar yn 2025. Bydd cleifion o Feddygfa Ringland a Meddygfa'r Parc yn derbyn gohebiaeth gan y Bwrdd Iechyd yn eu hysbysu pryd y byddant yn symud i fewn i'r ganolfan newydd.



### Newyddion Ymgysylltu'r Gymuned

Mae'r gwanwyn wedi bod yn gyfnod prysur o ran ymgysylltu'r gymuned. Dros y ddau fis diwethaf, rydyn ni wedi cael y pleser o groesawu 58 o fyfyrwr o Goleg Gwent i'r safle i ddsygu am y prosiect. Cafodd y myfyrwyr gyflwyniad ar y gweithwyr a'r dechnoleg sydd ynghlwm wrth gyflawni'r prosiect, cyn mynd ar daith o gwmpas yr adeilad. Ym mis Mai, fe gymeron ni ran yn Achlysur Ymgynghori â'r Gymuned Bwrdd Iechyd Prifysgol Aneurin Bevan ar gyfer y datblygiad. Roedd hi'n gyfle gwych i drafod yr holl gynnydd a wnaed ar y safle gyda'r trigolion lleol. Y mis yma, estynnwyd ein cymorth i fyfyrwyr gwaith coed Coleg Gwent ar gyfer eu prosiect terfynol trwy baratoi briff dylunio ar gyfer dwy fainc a storfa finiau. Bu'r coleg yn ddigon caredig i gyflwyno'r eitemau hyn i'r safle, ac mae'r staff wrth eu bodd yn

### Meet the team....



**Nick Hamersley**  
Rheolwr y Prosiect (Arweinydd Prosiect)



**Ian Davies**  
Rheolwr y Prosiect



**Peter Stanton**  
Rheolwr Contractau



**Abigail Bowler**  
Cydylynydd CSR



**Lorraine Morgan**  
Rheolwr Rhaglen BIPAB



**Carolyn Frame**  
Rheolwr Cyfathrebu ac Ymgysylltu Gofal Sylfaenol BIPAB

eu defnyddio. Pan fydd y gwaith ar y safle wedi ei gwblhau, bydd y meinciau hyn yn cael cartref newydd gydag ysgol neu elusen leol fel y gellir eu mwynhau am sawl haf i ddod.

Os ydych chi ni ystyried cysylltiad/menter gyda chi, cysylltwch ag Abigail Bowler trwy e-bostio [abigail.bowler@kier.co.uk](mailto:abigail.bowler@kier.co.uk)

