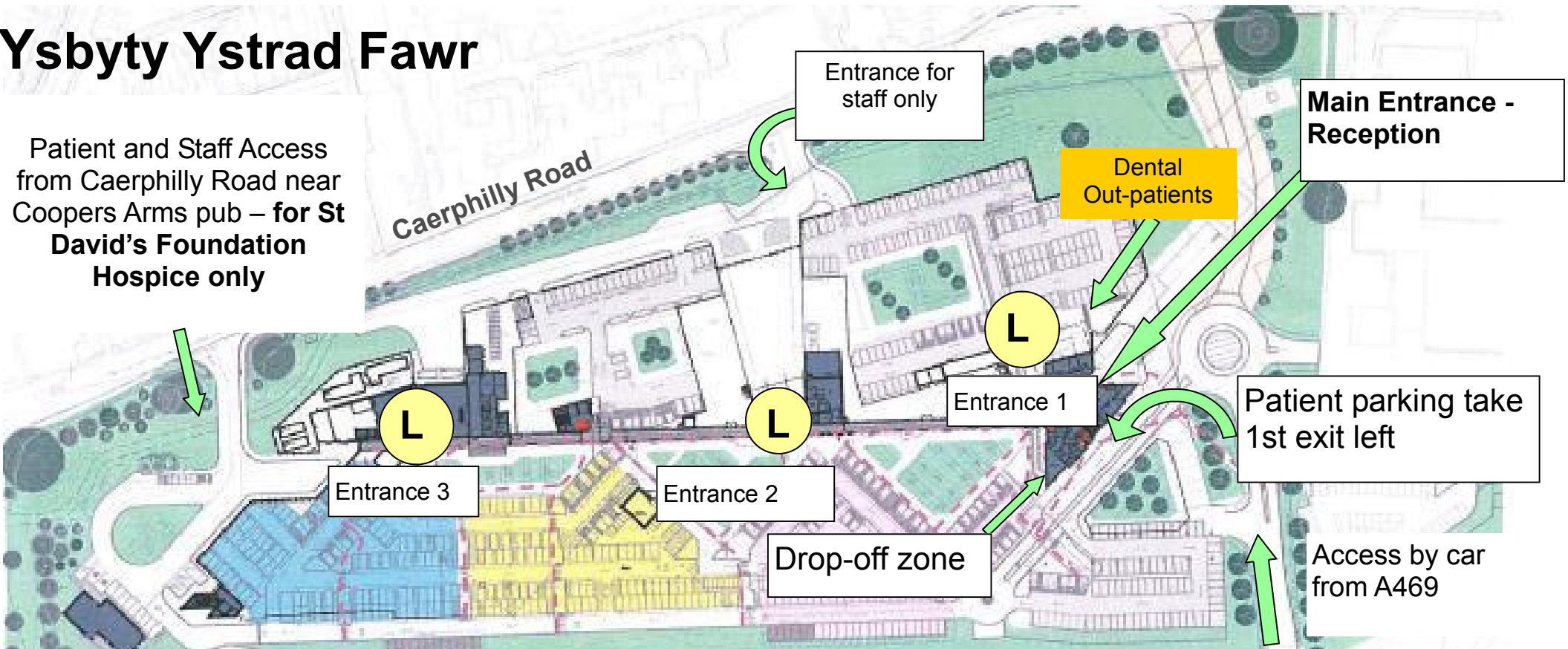


# Ysbyty Ystrad Fawr

Patient and Staff Access from Caerphilly Road near Coopers Arms pub – for **St David's Foundation Hospice only**



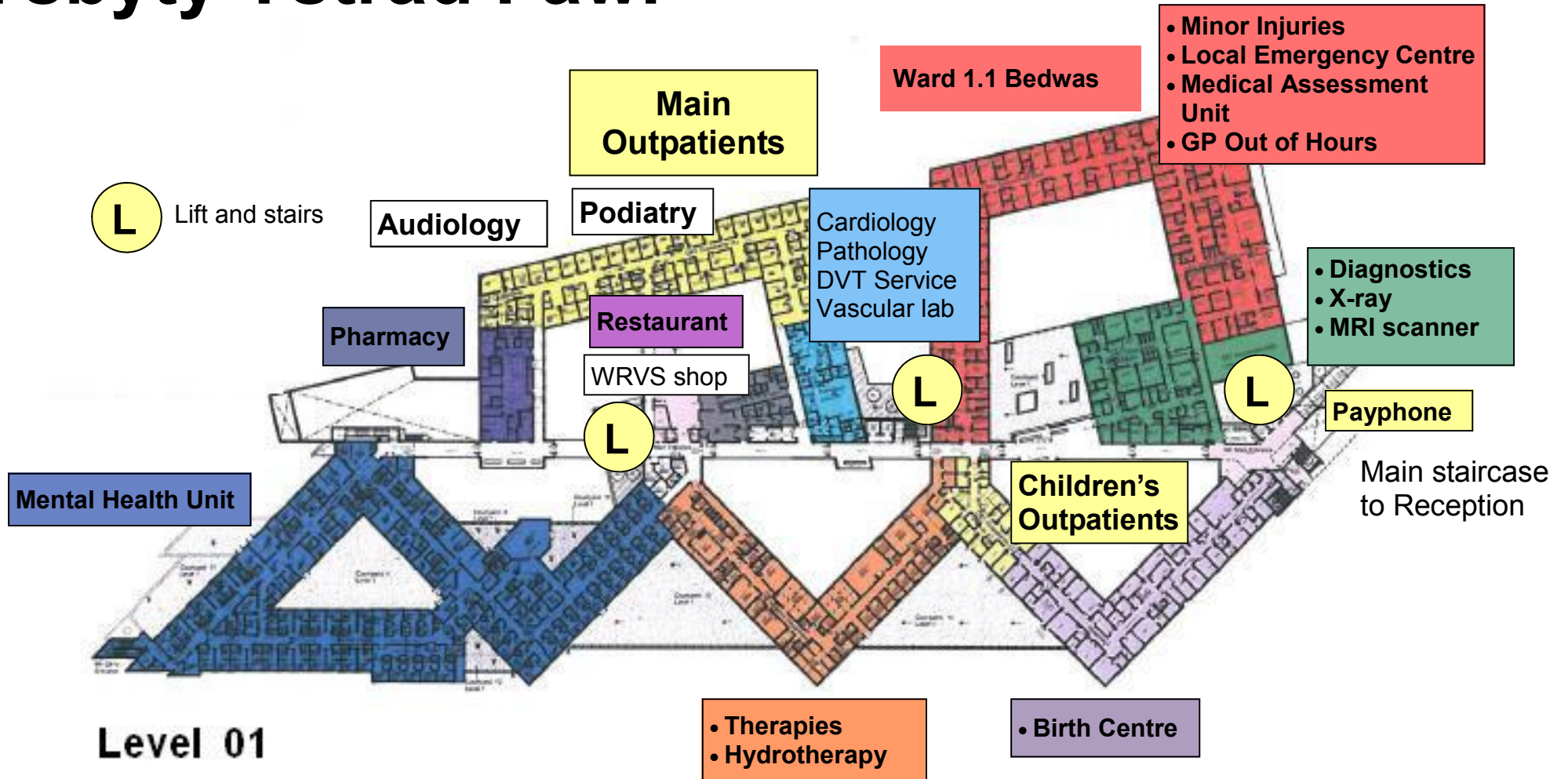
St David's Foundation Hospice

**Level 00 Car Park**

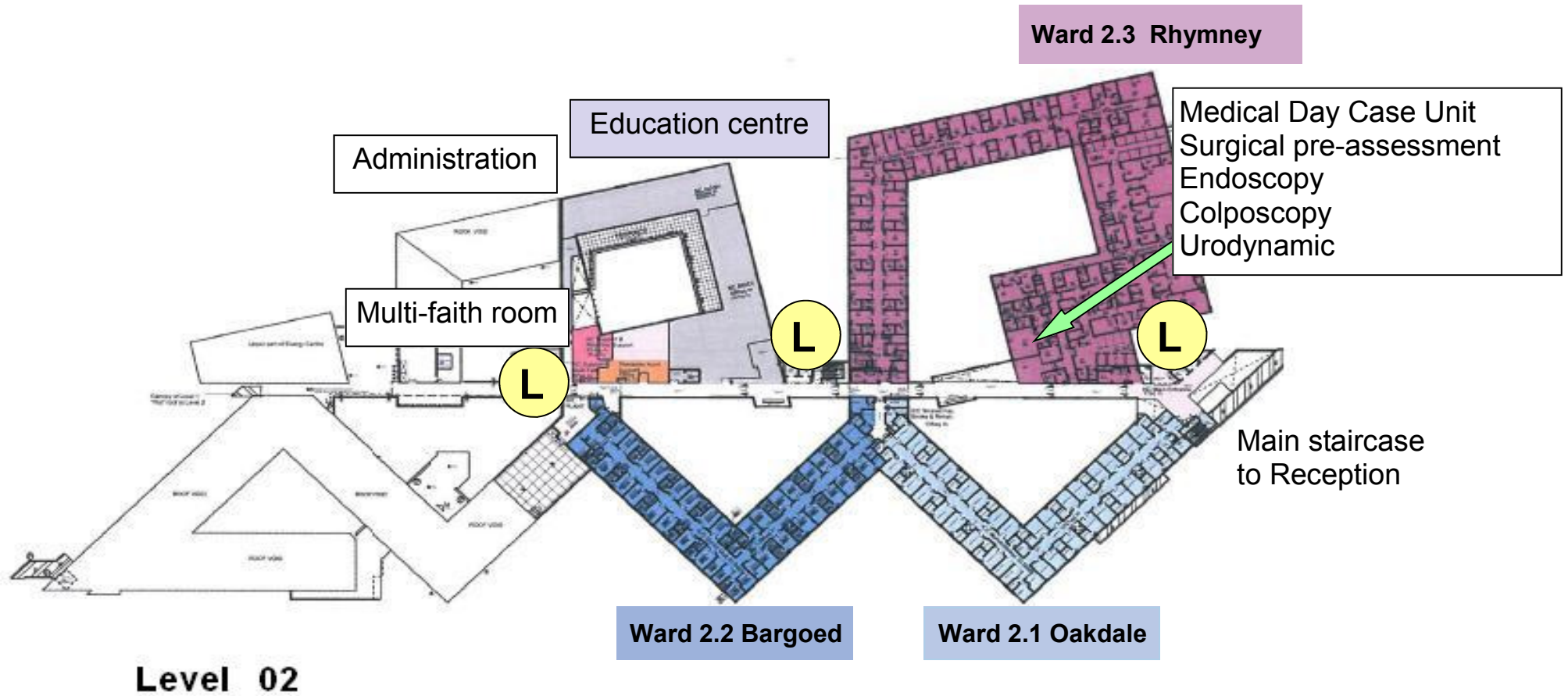
**L** Lift and stairs

Use Entrance 1 - for		Use Entrance 2 - for		Use Entrance 3 - for	
Coffee Shop	Level 0	Physiotherapy and other therapies	Level 1	Outpatients	Level 1
Dental Outpatients	Level 0	All Wards		Pharmacy	Level 1
Local Emergency Centre, Medical Assessment Unit, GP Out of Hours, Minor Injuries	Level 1	Medical Day Case Unit, Surgical pre-assesment, Colposcopy, Urodynamic, Phototherapy	Level 2	Mental Health Unit	Level 1
Birth Centre	Level 1			Restaurant	Level 1
X-ray	Level 1			Hydrotherapy	Level 1
Children's Outpatients	Level 1			Administration	Level 2
MRI scanner	Level 1			Occupational Health	Level 3
Endoscopy	Level 2				

# Ysbyty Ystrad Fawr



# Ysbyty Ystrad Fawr

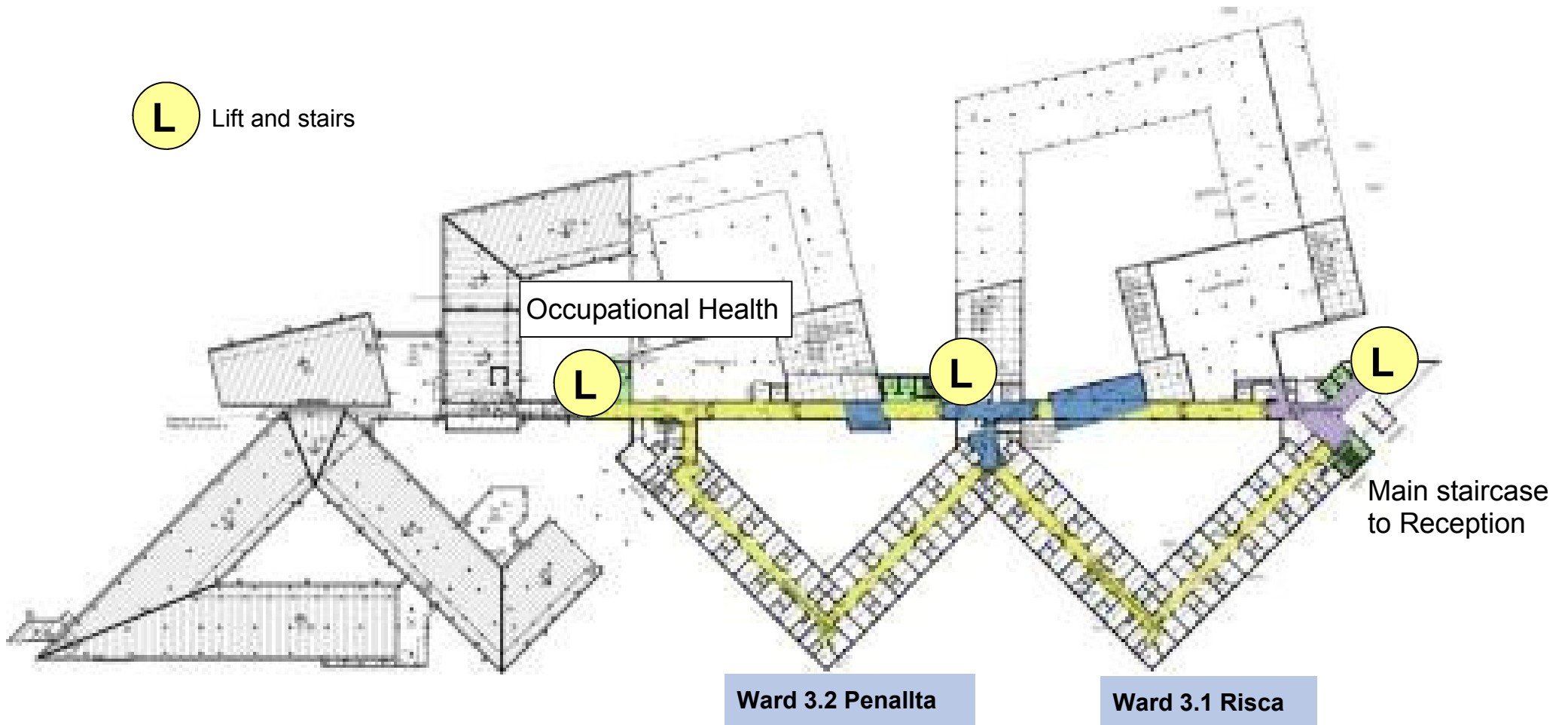


**Level 02**

**L** Lift and stairs

# Ysbyty Ystrad Fawr

**L** Lift and stairs



**Level 03**