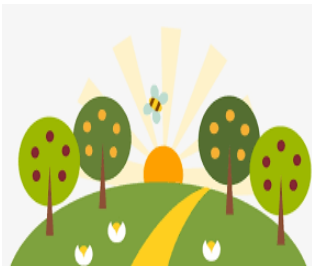


# Patient Support Evening



@



**Belle Vue Park (Bandstand) from  
5.30pm September 7<sup>th</sup> 2021**

*Refreshments available*

- Wellbeing talk from our clinical psychologist
- Meet the team and learn about local liver services
- First face to face meeting since the start of the pandemic- great chance to chat to other patients

For details email:

[ABB.LiverNurseAdviceLine@wales.nhs.uk](mailto:ABB.LiverNurseAdviceLine@wales.nhs.uk)