



GIG
CYMRU
NHS
WALES

Bwrdd Iechyd Prifysgol
Aneurin Bevan
University Health Board

Dyfodol Clinigol
Clinical Futures

Cylchlythyr Staff

Staff Newsletter



ISSUE 23 23rd February 2022



Message from Glyn Jones, Interim Chief Executive

Shwmae pawb / hello all, welcome to this week's newsletter.

We were faced with yet another challenge last week- this time, in the shape of storm Eunice. The red weather warning really tested our resilience once again, and, as always, you all acted quickly to ensure the safety of our staff, patients and residents. I'd like to take this opportunity to thank every one of you who made decisions, rearranged appointments and made your way to and from work in worrying conditions.

I am so pleased to see that the work on our Employee Wellbeing 'Centre of Excellence' is underway. This wellbeing centre will form a real hub for staff to focus on their health and wellbeing, which is crucial during such challenging times.

It's also great to see the 'Work With Us' Roadshow back out in the community. This is a great opportunity to hear from the public and recruit new staff, and I look forward to heading out with the team again soon.

Take care, **Glyn**

Your New Wellbeing Centre

Exciting news- building work on our new *Wellbeing Centre of Excellence* development at Grange House, Llanfrechfa Grange, has commenced! This Centre of Excellence will support employee wellbeing and engagement, which is a key priority for the Health Board.

Throughout the development process, the main entrance to Grange House will remain unaffected, and meeting rooms can be booked as normal.

As the building work progresses, there will be some unavoidable disruption to the building, but this will be kept to a minimum.

All services affected by the development have been provided alternative accommodation, and we are very grateful to services in Grange House who have willingly offered their office spaces to support other teams.

We'd like to thank staff for their continued support and patience during this period. Keep an eye out for future updates of this exciting new Wellbeing Centre!



We'd also like to remind you that your wellbeing is an absolute priority for us, so if you are feeling overwhelmed or struggling, please speak to your line manager, a colleague, or contact our wellbeing service. It is important that we all look after each other and are kind to one another. Please don't be afraid to say when you need some support.

Work With Us Roadshow Tour is BACK!

After a short break, we're back on a tour around the Health Board area and are pleased to announce our confirmed dates and venues for 2022. Our Roadshow is a fantastic opportunity for us to engage with members of the public, discuss how our services have changed since the opening of The Grange University Hospital, and explore future careers within our Health Board.



If any staff wish to jump on board, engage with the public and promote any important messages, please e-mail ABB.Engagement@wales.nhs.uk.

Our full 'Work With Us' Roadshow timetable can be located on our website: abuhb.nhs.wales/about-us/public-engagement-consultation/work-with-us-roadshows/

Consultant Connect Service Reduces Unnecessary Hospital Admissions

Consultant Connect, an advice and guidance service that enables Primary Care colleagues to seek rapid support from a field specialist, has already helped patients avoid hospital care since its launch.

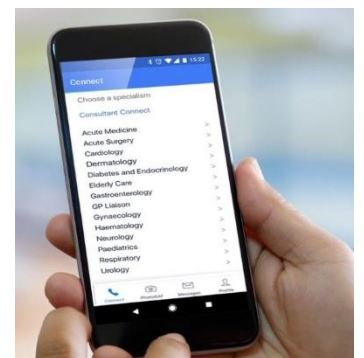
In our Health Board, the telephone service connects Primary Care staff to specialists at The Grange University Hospital. So far, 64% of those patients discussed via this service have avoided an unnecessary visit to hospital.

Nakul Gupta, Paediatric Consultant at Aneurin Bevan University Health Board, said:

"GPs that I've spoken to have found it useful. Together, we can work through uncertainties and provide advice. I find it rewarding."

The *Consultant Connect* service is free to clinicians across the Health Board and can be accessed via a GP Surgery's unique dial-in number, or via the *Consultant Connect* app, which can be downloaded from the [App Store](#) or [Google Play](#).

For queries, feedback or to request a demo of Consultant Connect, please contact the Account Manager, Celia Enderby – celia.enderby@consultantconnect.org.uk



Personal Protective Equipment Update

In order to reduce the ongoing risk to ourselves, our families, colleagues, and patients, it is of critical importance that we continue to adhere to the national guidelines and legislation on infection prevention and control, social distancing, the wearing of Personal Protective Equipment (PPE) and testing requirements at all times.

Please see the latest guidance on the [Infection Prevention - Personal Protective Equipment Intranet page](#).

Active Bystander Training

We are pleased to be able to offer Active Bystander training to any staff who wish to attend, which aims to empower staff to challenge poor behaviours and bring about cultural change.

By the end of the workshop, you will:

- Understand the importance of being an active bystander
- Have learnt skills and techniques to positively challenge bullying, harassment and inappropriate behaviours
- Have agreed steps to take to be an effective bystander

These are standalone sessions for up to 40 staff and will be held virtually via Teams on the below dates. To book onto one of the courses, please e-mail ABB.EDI@wales.nhs.uk

31st March, 12pm–1pm
21st April, 12pm–1pm
5th May, 1pm–2pm
16th June, 1pm–2pm
14th July, 12pm–1pm
11th August, 12pm–1pm

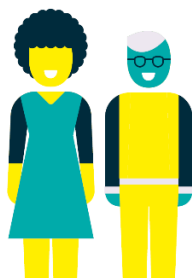


Improving Bowel Cancer Survival in Wales

Moondance Cancer Initiative, in collaboration with *NHS Research Team Cedar* and *Bowel Cancer UK*, are launching a project to understand how bowel cancer survival in Wales can be improved and are looking for people affected by the disease to take part.

**How can we improve
bowel cancer survival
in Wales?**

**Share your
views to help
us find out**



Bowel cancer is the second biggest cancer killer in Wales, but it is treatable and curable, especially if diagnosed early. Nearly everyone survives bowel cancer if diagnosed at the earliest stage, however this drops significantly as the disease develops. Evidence is gathering worldwide that, if we got everything right in bowel cancer prevention, screening, and care, we could hugely reduce the number of lives cut short by the disease.

The project is looking for people affected by bowel cancer, including family members, to complete a survey about their experience as well as ideas and thoughts on how bowel cancer care can be improved.

This is an opportunity for your patients to have their say on the development of services in Wales and help shape and influence improvements in care across the country. The survey will close on Monday 18th April 2022. Complete the survey here: <https://cardiff.onlinesurveys.ac.uk/bowel-cancer-survey>

Infection Prevention and Control Team Newsletter

The Infection Prevention and Control Team (IPaC) are delighted to release the first issue of their new Infection Prevention and Control Newsletter, as we all seek to keep our patients, ourselves and each other safe this winter. February's issue is available here: <http://howis.wales.nhs.uk/sitesplus/866/news/69225>



Welsh Community Care Information System Newsletter



The Welsh Community Care Information System (WCCIS) are happy to release their February edition newsletter, focusing on Mental Health and Learning Disability Team updates.

The newsletter includes important updates on their new Go LIVE date for the WCCIS system, Programme Update, Training, Mobilisation & Day 1 readiness. View the newsletter here:

<http://howis.wales.nhs.uk/sitesplus/866/news/69226>

Reminder to Sell or Carry-over your Annual Leave

Don't forget that you can now sell or carry-over any remaining annual leave from the current 2021/22 year.

Please see [the NHS Wales Scheme arrangements and FAQs](#). If you would like to sell or carry over any of your annual leave, please fill in this form [Selling Annual Leave Scheme Request Form](#) and then e-mail it to ABB.E-SystemsCarryOverAL@wales.nhs.uk.



The below table outlines the payroll cut off dates for forms to be submitted:

Form Submitted By	Processed for Payment
1 March 2022	April 2022
1 April 2022	May 2022
1 May 2022	June 2022

If you have any ideas for this fortnightly newsletter, please send an e-mail to ABB.CommsAndEngagement@wales.nhs.uk



Aneurin Bevan University Health Board



@AneurinBevanUHB